

# VALVES

## Hydraulic Pump

### Mounted

#### 4 Way/3 Position Manual

### 4-WAY/3-POSITION (TANDEM CENTER) VALVE WITH "POSI-CHECK®"

**Application** – Single or double-acting cylinders.

**Actuation** – Lever operated, detent positioned.

**Functions** – "Advance", "hold" and "return". The "Posi-Check®" feature guards against pressure loss when shifting from "advance" to "hold" position.

**Used on these pumps** – P460, PA6D, PA17, PA46, PA55, PE17, PE21, PE30, PE46, PE55, PE84, PE90, PE120, PE200, PE400, PED, PG30, PG55, PG120, PG400, PQ60 and PQ120 series

**No. 9506** – 4-way/3-position (tandem center) manual valve. Wt., 5.1 lbs.

### 4-WAY/3-POSITION (TANDEM CENTER) AND (OPEN-CENTER) MANUAL VALVES

**Application** – Single- or double-acting cylinders.

**Actuation** – Lever operated, detent positioned.

**Functions** – The 9500 provides "advance", "hold" and "return". The 9511 (open center) valve can be used if holding is not a requirement, as when running two separate hydraulic tools. Provides "advance" and "return" only.

**Used on these pumps** – P460, PA17, PA46, PA55, PE17\*, PE21, PE30, PE46, PE55, PE84, PE90, PE120, PE200, PE400, PG30, PG55, PG120, PG400, PQ60 and PQ120 series. \*Does not mount without 251528

**No. 9500** – 4-way/3-position (tandem center) manual valve. Wt., 4.2 lbs.

**No. 9511** – Same as 9500, except has an open center.

### 4-WAY/3-POSITION (CLOSED CENTER) MANUAL VALVE WITH "POSI-CHECK®"

**Application** – Single- or double-acting cylinders.

**Actuation** – Lever operated, detent positioned.

**Functions** – Similar to 9506, but is a closed center valve with "Posi-Check®". Generally used to operate multiple cylinders with a single pump. Provides "advance", "hold" and "return". The "Posi-Check®" feature guards against pressure loss when shifting from the "advance" to "hold" position. See note on page 124 regarding plugging of ports and resulting heat build-up.

**Used on these pumps** – P460, PA17, PA46, PA55, PA60, PA6D, PE17, PE21, PE30, PE46, PE55, PE84, PE90, PE120, PE200, PE400, PQ60 and PQ120 series.

**No. 9507** – 4-way/3-position (closed center) manual valve. Wt., 5 lbs.

### 4-WAY/3-POSITION (CLOSED CENTER) MANUAL VALVE

**Application** – Single- or double-acting cylinders.

**Actuation** – Lever operated, detent positioned.

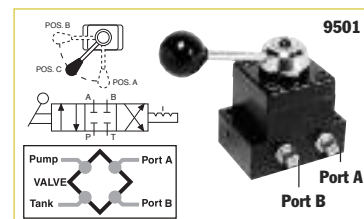
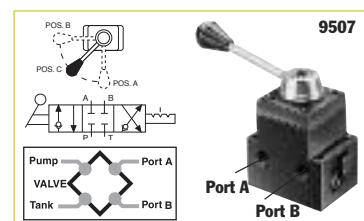
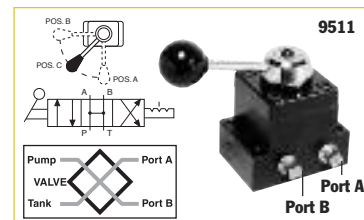
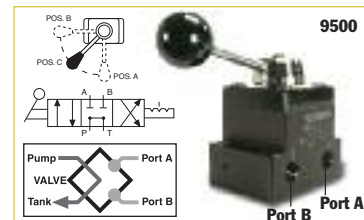
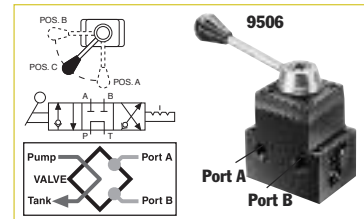
**Functions** – "Advance", "hold" and "return". Closed center design makes valve suitable for operating multiple cylinders from a single pump. See note on page 52 regarding plugging of ports and resulting heat build-up.

**Used on these pumps** – P460, PA17, PA46, PA55, PA60, PE17, PE21, PE30, PE46, PE55, PE84, PE90, PE120, PE200, PE400, PQ60 and P120 series.

**No. 9501** – 4-way/3-position (closed center) valve. Wt., 4.2 lbs.

**NOTE:** A pressure switch and/or gauge may be attached to valves 9500, 9501, 9506, 9511 if desired (see pages 110-111, 131). Also, all valves on this page may be remote mounted with a 9510 subplate (see page 131).

**10,000 PSI., 3/8" PORTS,  
5 GPM MAX FLOW RATE.**



ACCESSORIES

