

ACCESSORIES

C Series

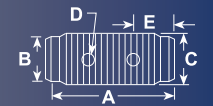
Mounting accessories



CYLINDERS



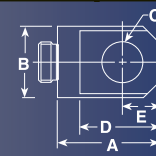
Threaded Connector



Cylinder Tons	Part No.	A	B	C	D	E
5	25748	1 ³ / ₄	7/8 Dia.	3/4 — 14 NPSM	3/16 Dia.	1/2
10	25664	1 ⁵ / ₈	1 ⁷ / ₁₆ Dia.	1 ¹ / ₄ — 11 ¹ / ₂ NPSM	5/16 Dia.	9/16
25	25654	2 ¹ / ₄	2 ¹ / ₈ Dia.	2 — 11 ¹ / ₂ NPSM	3/8 Dia.	5/8



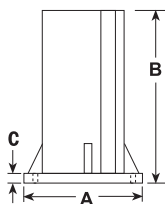
Piston Clevis



Cylinder Tons	Part No.	A	B	C	D	E	F
5	350095	1 ³ / ₄	1 ¹ / ₈	5/8	17/16	5/8	3/4-16
10 or 15*	350094	2 ⁹ / ₁₆	1 ¹¹ / ₁₆	7/8	2 ⁵ / ₁₆	1	1-8
25**	420059	2 ¹⁵ / ₁₆	2 ¹ / ₄	1 ¹ / ₄	2 ¹¹ / ₁₆	1 ¹ / ₄	1 ¹ / ₂ -16

* Can be used with RD106, RD1010 Cylinder.

** RD256 & RD2514

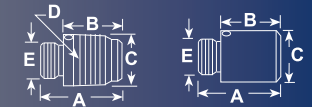


Support Base

Cylinder	Order	A	B	C
10	420062	7	5	7/16
25	420063	7	5	7/16



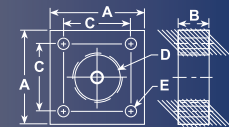
Threaded Adapter Plain Adapter



Cylinder Tons	Part No.	A	B	C	D	E
5	202178 (threaded)	1 ⁵ / ₈	1 ¹ / ₈	1 ¹ / ₁₆ Dia.	3/4 — 14 NPT	3/4 — 16 UNF-2A
10 or 15	202179 (threaded)	1 ¹³ / ₁₆	1 ¹ / ₁₆	1 ⁵ / ₈ Dia.	1 ¹ / ₄ — 11 ¹ / ₂ NPT	1 — 8 UNC-2A
25	202180 (threaded)	2 ³ / ₄	1 ⁷ / ₈	2 ³ / ₈ Dia.	2 — 11 ¹ / ₂ NPT	1 ¹ / ₂ — 16 UN-2A
10 or 15	350724 (plain)	2	1 ¹ / ₄	1 ³¹ / ₆₄ Dia.	—	1 — 8 UNC-2A
25	350723 (plain)	2 ¹ / ₈	1 ¹ / ₄	2 ¹ / ₄ Dia.	—	1 ¹ / ₂ — 16 UN-2A



Cylinder Mounting Plate



Cylinder Tons	Part No.	A	B	C	D	E
5	350099	3	1	2 ¹ / ₈	1 ¹ / ₂ — 16 UN-2B	1 ¹¹ / ₃₂
10	350100	3 ¹ / ₂	1	2 ⁵ / ₈	2 ¹ / ₄ — 14 UNS-2B	1 ¹¹ / ₃₂
15	350184	3 ¹ / ₂	1	2 ⁵ / ₈	2 ³ / ₄ — 16 UN-2B	1 ¹¹ / ₃₂
25	420064	5	2	3 ²¹ / ₃₂	3 ⁵ / ₁₆ — 12 UN-2B	2 ¹ / ₃₂

Extension Rod

Cylinder Tons	Part No.	A	B	C	D	E
5	350895	5	7/8 Dia.	3/4 — 14 NPT	21/64 Dia.	2
5	38908	10	7/8 Dia.	3/4 — 14 NPT	21/64 Dia.	2
5	350896	18	7/8 Dia.	3/4 — 14 NPT	21/64 Dia.	2
10	350897	5	17/16 Dia.	1 1/4 — 11 1/2 NPT	21/64 Dia.	2
10	38909	10	17/16 Dia.	1 1/4 — 11 1/2 NPT	21/64 Dia.	2
10	350898	18	17/16 Dia.	1 1/4 — 11 1/2 NPT	21/64 Dia.	2

Cylinder Base Attachment

Cylinder Tons	Part No.	A	B	C	D
5	208380	1 5/8	1 3/4 Dia.	3/4 14 NPSM	9/32 Dia. (2) 1/4 — 20 UNC x 3/4 Lg. Socket Head Cap Screws
10	208381	1 7/8	2 1/2 Dia.	1 1/4 — 11 1/2 NPSM	11/32 Dia. (2) 5/16 — 18 UNC x 3/4 Lg. Socket Head Cap Screws
25	208382	2 3/8	3 3/8 Dia.	2 — 11 1/2 NPSM	17/32 Dia. (2) 1/2 — 13 UNC x 1 Lg. Socket Head Cap Screws

Cylinder Flat Base

Cylinder Tons	Part No.	A	B	C	D
5	25750 *	4 1/2	2 1/2	3/4 — 14 NPSM	1 11/32
10	32325 *	6 9/16	3 1/2	1 1/4 — 11 1/2 NPSM	1 7/16

Smooth Saddle Serrated Saddle

Cylinder Tons	Part No.	A	B	C
5	25746 *(serrated)	1 1/8	1 5/16 Dia.	3/4 — 14 NPSM
10 or 15	31772 *(serrated)	1 1/8	2 Dia.	1 1/4 — 11 1/2 NPSM
25	31776 *(serrated)	1 5/16	3 Dia.	2 — 11 1/2 NPSM
5	351575 *(plain)	1 1/8	1 5/16 Dia.	3/4 — 14 NPSM
10	24016 *(plain)	1 1/8	2 Dia.	1 1/4 — 11 1/2 NPSM
25	351576 *(plain)	1 5/16	3 Dia.	2 — 11 1/2 NPSM

Body Clevis†

Cylinder Tons	Part No.	A	B	C	D	E	F
5	350096	2 1/16	1 1/8	5/8	5/8	9/16	1/4
10	350097	3	1 11/16	7/8	1	1	1/4
15	350098	3 1/16	1 11/16	7/8	1	1	1/4
25	420061	3 9/16	2 1/4	1 1/4	1 1/4	1 1/2	1/4

Swivel Cap

Cylinder Tons	Part No.	A	B
10 or 15	350144	7/8	1 3/8
25	350145	1 1/8	2
55 or 75	350376	1 1/4	2 13/16
100	351574	1 29/32	3 15/32

90° "V" Base

Cylinder Tons	Part No.	A	B	C
5	25388 * 1 3/8	1 1/16	3/4 — 14 NPSM	
10	25395 * 2 1/8	2 1/8	1 1/4 — 11 1/2 NPSM	

Plunger Base

Cylinder Tons	Part No.	A	B	C
25	25652	6	1 1/4	2 — 11 1/2 NPSM

* Items require threaded adapter (Page 36) when used with "C" series cylinders. They may be used on threaded "CBT" cylinders without the use of an adapter.
 † Mounting screws are included.

