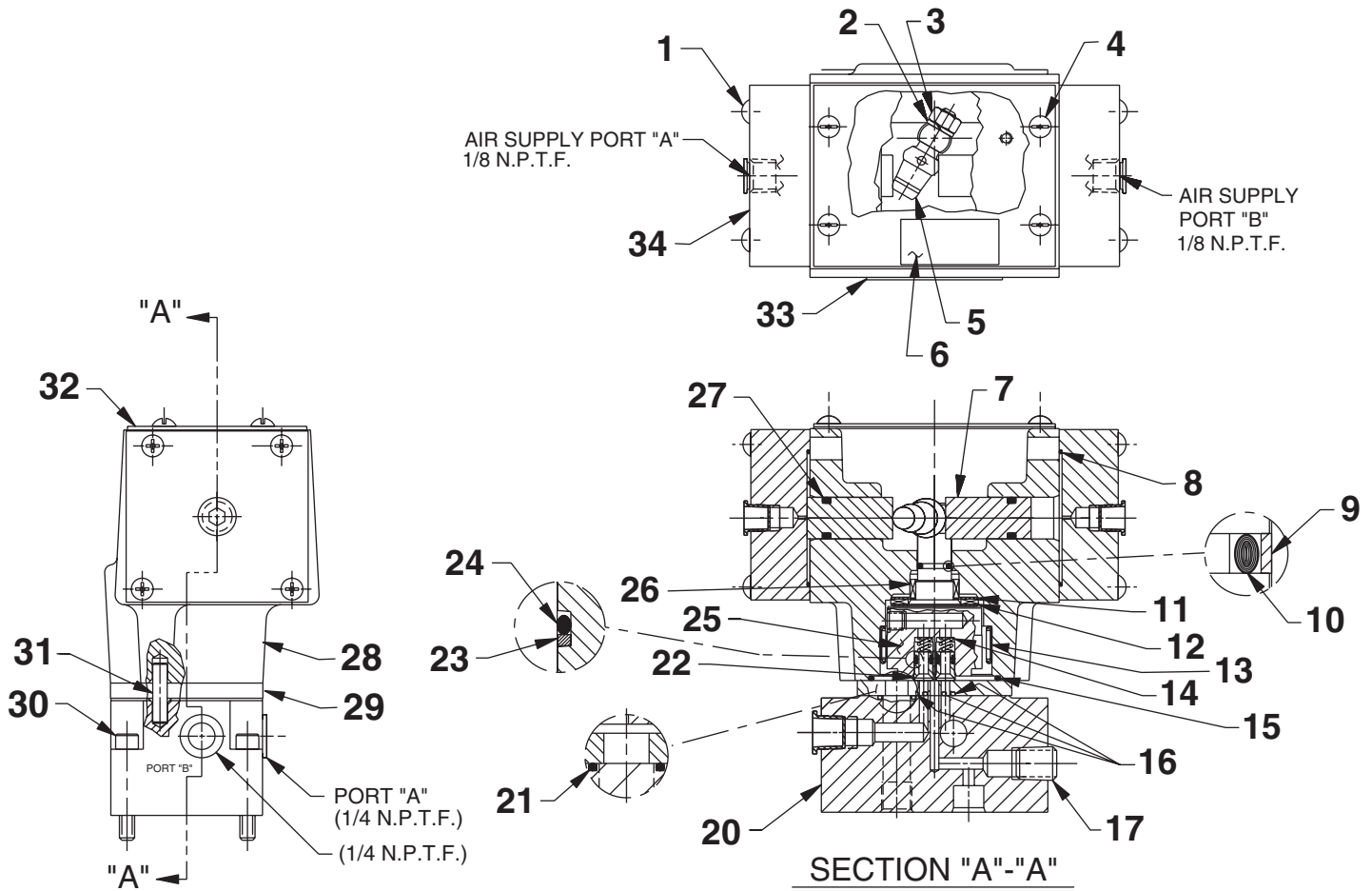


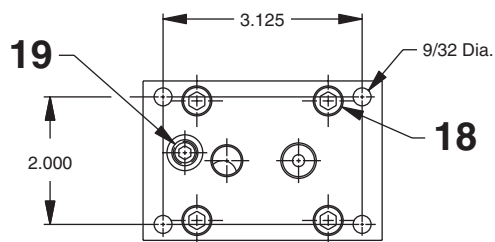
MODEL B TWO POSITION, 4-WAY, PUMP-MOUNTED, AIR-OPERATED VALVE ASSEMBLY



Refer to any operating instructions included with the product for detailed information about operation, testing, disassembly, and preventive maintenance.

Items found in this parts list have been carefully tested and selected.
Therefore: Use only genuine Power Team replacement parts!

Additional questions can be directed to our Technical Services Department.



MOUNTING HOLE DIMENSIONS

Parts List, Form No. 108068, Back sheet 1 of 1

Item No.	Part No.	No. Req'd	Description
1	*13025	8	Rnd. Hd. Screw (8-32 x 1-1/4 Lg.; Torque to 12/14 in. lbs.)
2	10245	1	Lockwasher (For 1/4" bolt)
3	15504	1	Locknut
4	10164	4	Machine Screw (#10-24 UNC x 3/8 Lg.)
5	304030	1	Lever (Lubricate at assembly)
6	209383	1	Patent Decal
7	208673	2	Cam Plunger (Lubricate at assembly)
8	*14852	2	O-ring (1.56 x 1.37 Nitrile)
9	*208672	1	Glyd Ring
10	*10268	1	O-ring (1/2 x 3/8 x 1/16; Nitrile)
	11439	1	O-ring (1/2 x 3/8 x 1/16; Viton)
	17716	1	O-ring (1/2 x 3/8 x 1/16; EPR)
11	15935	2	Thrust Washer
12	12188	1	Roller Bearing
13	17505	1	Needle Roller Bearing
14	15095	2	Compression Spring (1/4 O.D. x 15/32 Lg.)
15	†*214699	1	O-ring (2-3/16 x 2" x 3/32; Urethane)
	19017	1	O-ring (Viton)
	250400	1	O-ring (EPR)
16	†*15023	3	O-ring (5/16 x 3/16 x 1/16; Urethane)
	11437	3	O-ring (5/16 x 3/16 x 1/16; Viton)
	17714	3	O-ring (5/16 x 3/16 x 1/16; EPR)
17	10479	1	Pipe Plug (1/4 NPTF)
18	†252308	4	Soc. Hd. Cap Screw (5/16-18 x 2-1/4 Lg.; Torque to 170/180 in. lbs.)
19	15499	1	Pipe Plug (1/8 NPTF; Turn in flush)

Item No.	Part No.	No. Req'd	Description
20	†66203	1	Subplate
21	†*16164	1	O-ring (.63 x .50 Urethane)
	11440	1	O-ring (.63 x .50 Viton)
	12399	1	O-ring (.63 x .50 EPR)
22	303935	2	Shear Seal
23	*15174	2	Backup Washer (5/16 x 3/16 x 3/64)
24	*10265	2	O-ring (5/16 x 3/16 x 1/16; Nitrile)
	11437	2	O-ring (5/16 x 3/16 x 1/16; Viton)
	17714	2	O-ring (5/16 x 3/16 x 1/16; EPR)
25	52064	1	Rotor
26	208671	1	Needle Roller Bearing
27	*210230	2	O-ring (2.18 x 2.00 Urethane)
28	61077	1	Valve Body
29	†421896	1	Subplate
30	10022	4	Soc. Hd. Machine Screw (1/4-20 UNC x 1-1/2 Lg.; Note When using this valve on a PE30 Series pump order (4) 12001 Screws for mounting valve to pump.)
31	†252309	1	Spring Pin
32	303976	1	Cover
33	352031	1	Trade Name Decal (For 9594)
34	45209	1	Air Cap

PARTS INCLUDED BUT NOT SHOWN

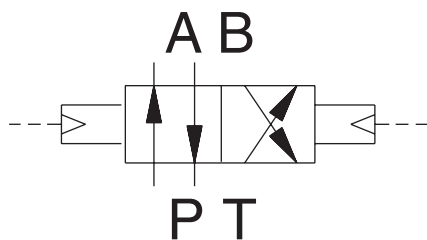
9689	1	Straight Fitting	} For 9594
16797	1	90° Elbow Fitting	
200609	1	Drain Tube	

Part numbers marked with an asterisk (*) are contained in Repair Kit No. 300332.

NOTE: Part numbers marked with a dagger (†) are in Conversion Kit No. 301023.

This kit converts a Model A valve to a Model B.

SPECIFICATIONS



UNIT SCHEMATIC

2-POSITION, 4-WAY
AIR OPERATED (65 PSI MIN. / 150 PSI MAX.)
PUMP MOUNTED

RATED PRESSURE = 10,000 P.S.I.
RATED CASE PRESSURE = 1,000 P.S.I.
RATED FLOW = 5 G.P.M.

FUNCTION:

"A" POSITION: (AIR PORT "A")
HYD. PRESSURE TO "A" PORT,
"B" PORT TO TANK.

"B" POSITION: (AIR PORT "B")
HYD. PRESSURE TO "B" PORT,
"A" PORT TO TANK.

NOTE:

ALL PORTS OPEN TO TANK DURING
TRANSITION BETWEEN VALVE POSITIONS.

Note: Shaded areas reflect last revision(s) made to this form.