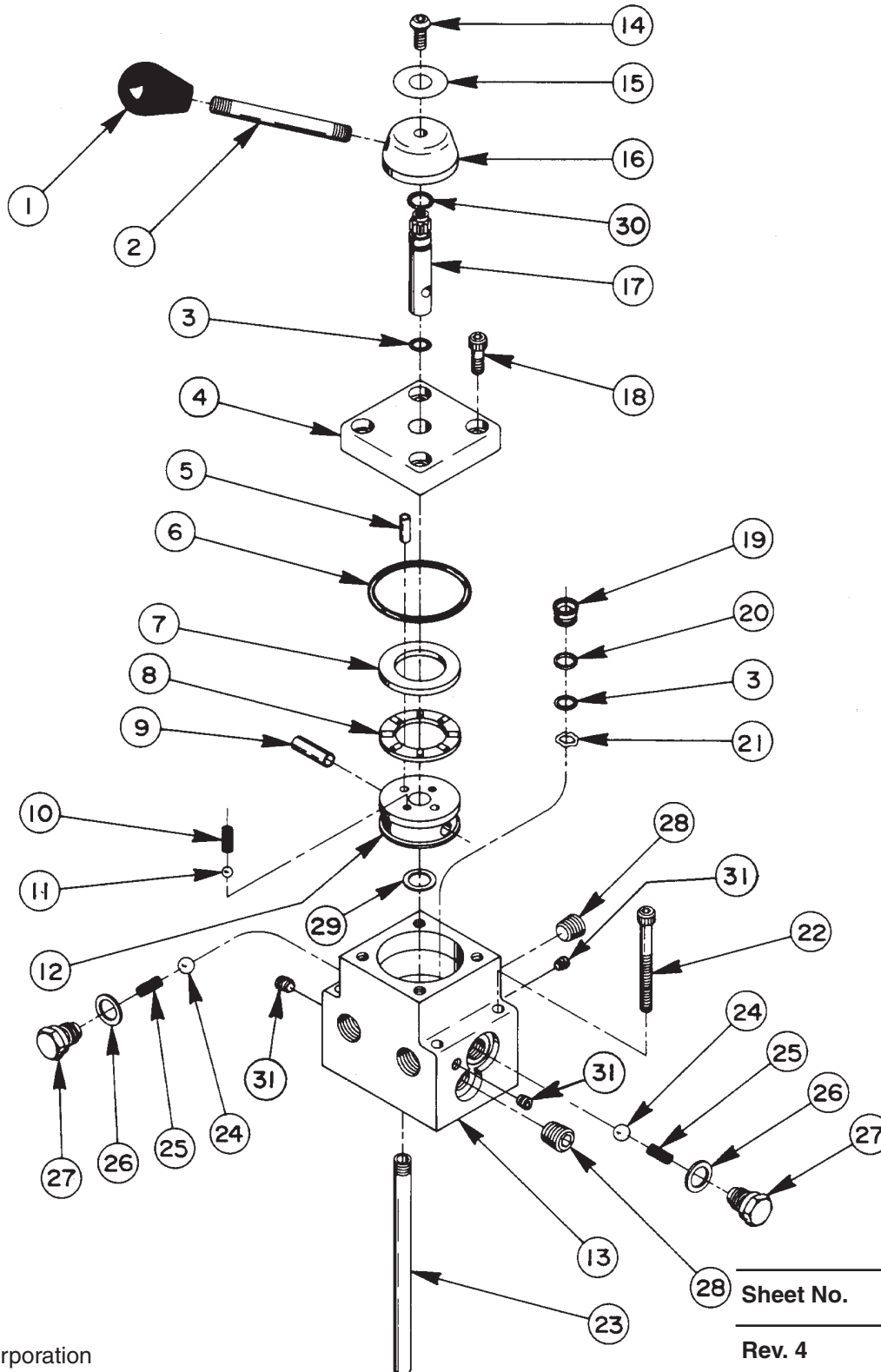


Parts List for:

9506	9508
9506-MHI	9508-BOC
9507	9509

## VALVE ASSEMBLY



# Parts List, Form No. 100628, Back sheet 1 of 3

Item No.	Part No.	No. Req'd	Description
1	211911	1	Plastic Knob
2	250042	1	Stud
3	*10268	6	O-ring (1/2 X 3/8 X 1/16; Nitrile)
	11439	6	O-ring (1/2 X 3/8 X 1/16; Viton)
	17716	6	O-ring (1/2 X 3/8 X 1/16; EPR)
4	61343	1	End Cap
5	211915	1	Pin (7/32 dia. X 5/8 Lg.; On valves manufactured before 6-1-91)
	250056	1	Pin (7/32 dia. x 15/16 Lg.; On valves manufactured after 6-1-91)
6	*15892	1	O-ring (1.956 X 1.720 X .118; Nitrile)
	19097	1	O-ring (1.956 X 1.720 X .118; Viton)
	212887	1	O-ring (1.956 X 1.720 X .118; EPR)
7	11227-1	1	Thrust Bearing Washer
8	11228	1	Roller Thrust Bearing
9	16940	1	Roll Pin (5/16 dia. X 1-1/2 Lg.; On valves manufactured before 6-1-91)
	10496	1	Roll Pin (5/16 dia. x 1" Lg; On valves manufactured after 6-1-91)
10	15691	1	Compression Spring (1/4 O.D. X 5/8 Lg.)
11	10375	1	Ball (1/4 dia.)
12	46086	1	Rotor (For 9506, 9509, & 9506-MHI)
	46087	1	Rotor (For 9507, 9508, & 9508-BOC)
13	61314	1	Valve Body
14	15911	1	Cap Screw (1/4-20 X 5/8 Lg.; Torque to 60/80 in. lbs.)
15	211936	1	Decal
16	46057	1	Stem End
17	46048	1	Stem
18	11013	4	Cap Screw (5/16-18 X 1" Lg.; Torque to 300/320 in. lbs.)
19	202480	5	Shear Seal
	252460	5	Seal
20	*11863	5	Backup Washer (1/2 X 3/8 X 1/16)
21	21975	5	Spring Washer
22	10856	4	Cap Screw (1/4-20 UNC X 2-1/2 Lg.) Note: When using this valve on a PE30 Series pump order (4) <b>11956</b> Cap Screws for mounting valve to pump.
23	200609	1	Drain Tube (For 9506, 9507, & 9506-MHI only)
24	10378	2	Ball (3/8 dia.)
25	10444	2	Compression Spring (3/16 I.D. X 13/32 Lg.)
26	*14874	2	Copper Washer (.700 X 1/2 X 1/32)
27	305975	2	Valve Screw (Torque to 30/35 ft. lbs.)
28	14972	2	Pipe Plug (1/4 NPTF)
29	214801	1	Spacer
30	*213674	1	Shaft Seal
31	15130	3	Pipe Plug (1/16 NPTF)

## PARTS INCLUDED BUT NOT SHOWN

209383	1	Patent Decal
--------	---	--------------

Part numbers marked with an asterisk (\*) are contained in Repair Kit No. 300451.  
 Note: Alternate material seals listed for special valves factory equipped with viton or EPR seals.

Refer to any operating instructions included with this product for detailed information about operation, testing, disassembly, reassembly, and preventive maintenance.

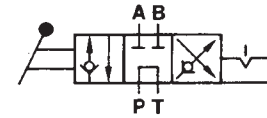
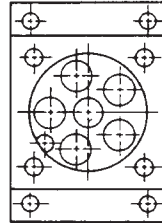
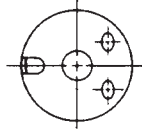
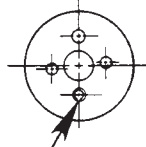
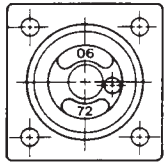
Items found in this parts list have been carefully tested and selected. **Therefore: Use only genuine replacement parts!**

Additional questions can be directed to our Technical Services Department.

Note: Shaded areas reflect last revision(s) made to this form.

### SPECIFICATIONS

#### 9506 & 9506-MHI (Pump Mounted) & 9509 (Remote Mounted) Manual (Posi-check) 3-Position, 4-Way Tandem Center Valve



Position opening as shown

**FUNCTION**

**Center (Hold) Position:**

"A" and "B" Ports blocked  
"Pressure" Port to tank

**Advance Position:**

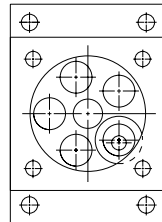
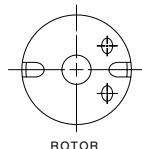
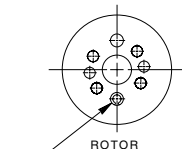
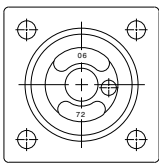
Pressure to "A" Port  
(Reverse flow checked)  
"B" Port to tank

**Return Position:**

Pressure to "B" Port  
(Reverse flow checked)  
"A" Port to tank

**NOTE:** "A" and "B" Ports are blocked with the pressure port open to tank during transition between valve positions. (Non-Interflow)

**For 9506-MHI only**



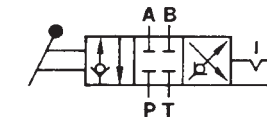
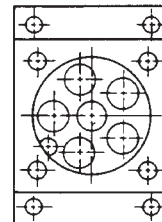
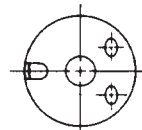
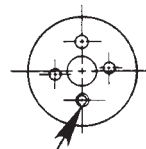
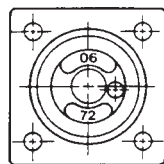
END CAP  
BOTTOM VIEW

ROTOR  
TOP VIEW  
ROLL PIN LOCATION  
(POSITION OPENING AS SHOWN)

ROTOR  
BOTTOM VIEW

VALVE BODY  
TOP VIEW

#### 9507 (Pump Mounted) & 9508 (Remote Mounted) Manual (Posi-check) 3-Position, 4-Way Closed Center Valve



Position opening as shown

**FUNCTION**

**Center (Hold) Position:**

All Ports blocked

**Advance Position:**

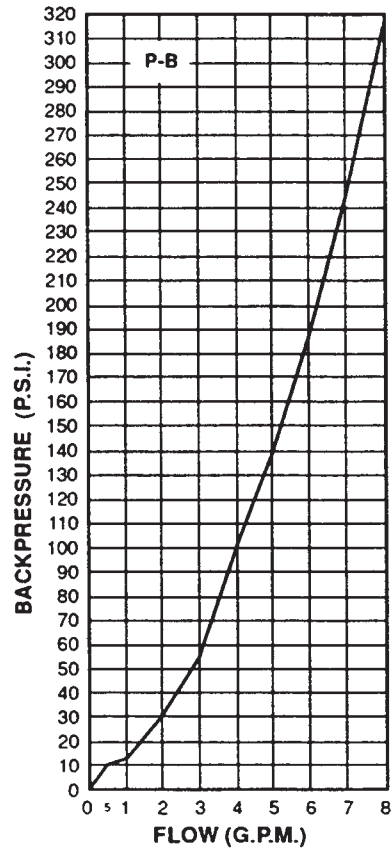
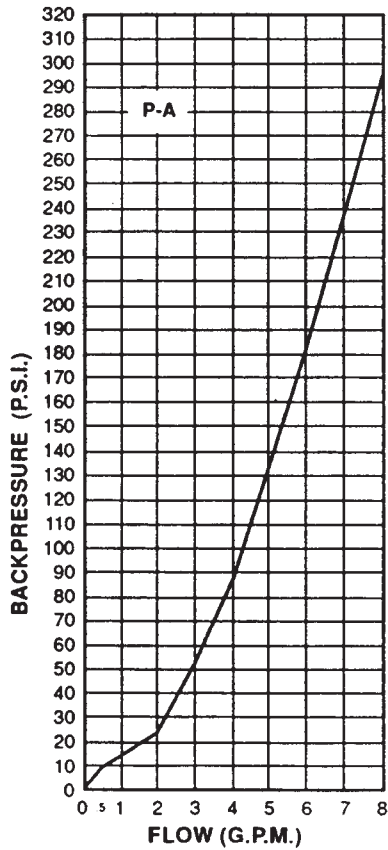
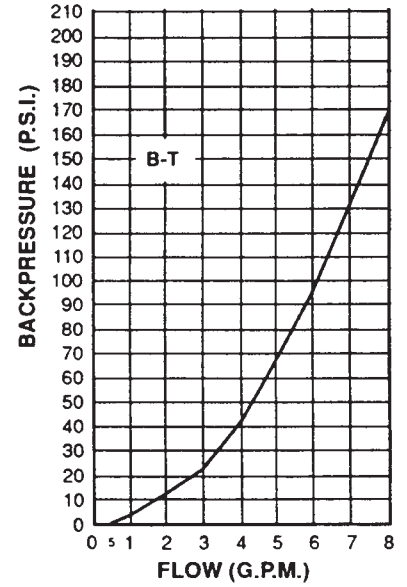
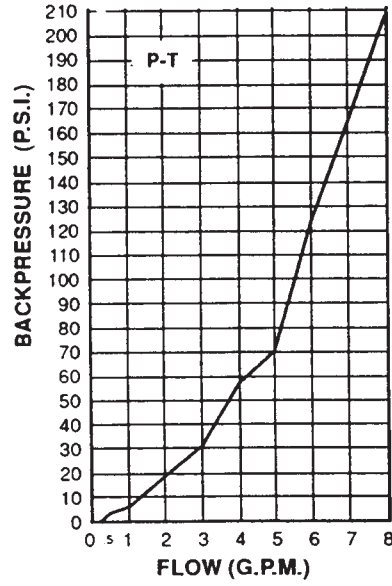
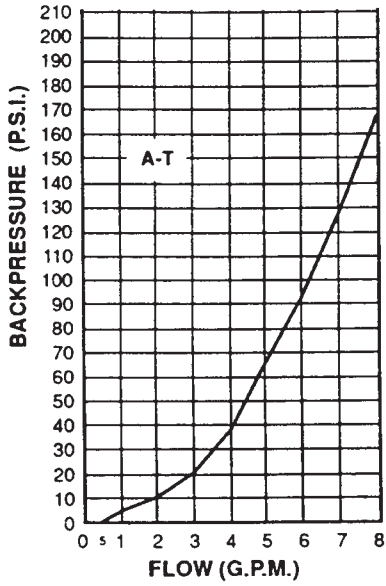
Pressure to "A" Port  
(Reverse flow checked)  
"B" Port to tank

**Return Position:**

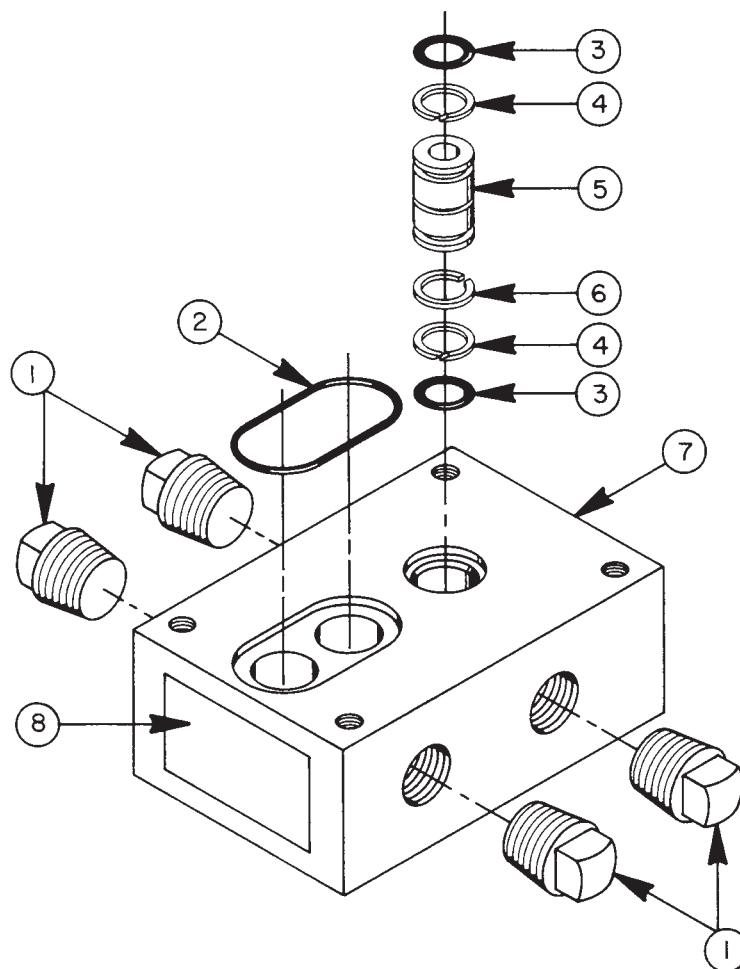
Pressure to "B" Port  
(Reverse flow checked)  
"A" Port to tank

**NOTE:** "A" and "B" Ports are blocked with the pressure port open to tank during transition between valve positions. (Non-Interflow)

## PRESSURE DROP AND FLOW CHARTS



**#9510 VALVE SUBPLATE  
REMOTE MOUNTED  
(INCLUDED WITH 9508, 9508-BOC, AND 9509)**



Item No.	Part No.	No. Req'd	Description
1	11127	4	Pipe Plug (3/8 NPTF)
2	*10914	1	O-ring (1-3/8 X 1-3/16 X 3/32; Nitrile)
	19007	1	O-ring (1-3/8 X 1-3/16 X 3/32; Viton)
	12486	1	O-ring (1-3/8 X 1-3/16 X 3/32; EPR)
3	*10268	2	O-ring (1/2 X 3/8 X 1/16; Nitrile)
	11439	2	O-ring (1/2 X 3/8 X 1/16; Viton)
	17716	2	O-ring (1/2 X 3/8 X 1/16; EPR)
4	*11863	2	Backup Washer (1/2 X 3/8 X 1/16)
5	21094	1	Bushing
6	251124	1	Retaining Ring
7	52506	1	Manifold Body
8	208358	1	Warning Decal

Part numbers marked with an asterisk (\*) are contained in Repair Kit No. 300451.  
Note: Alternate material seals listed for special valves factory equipped with viton or EPR seals.