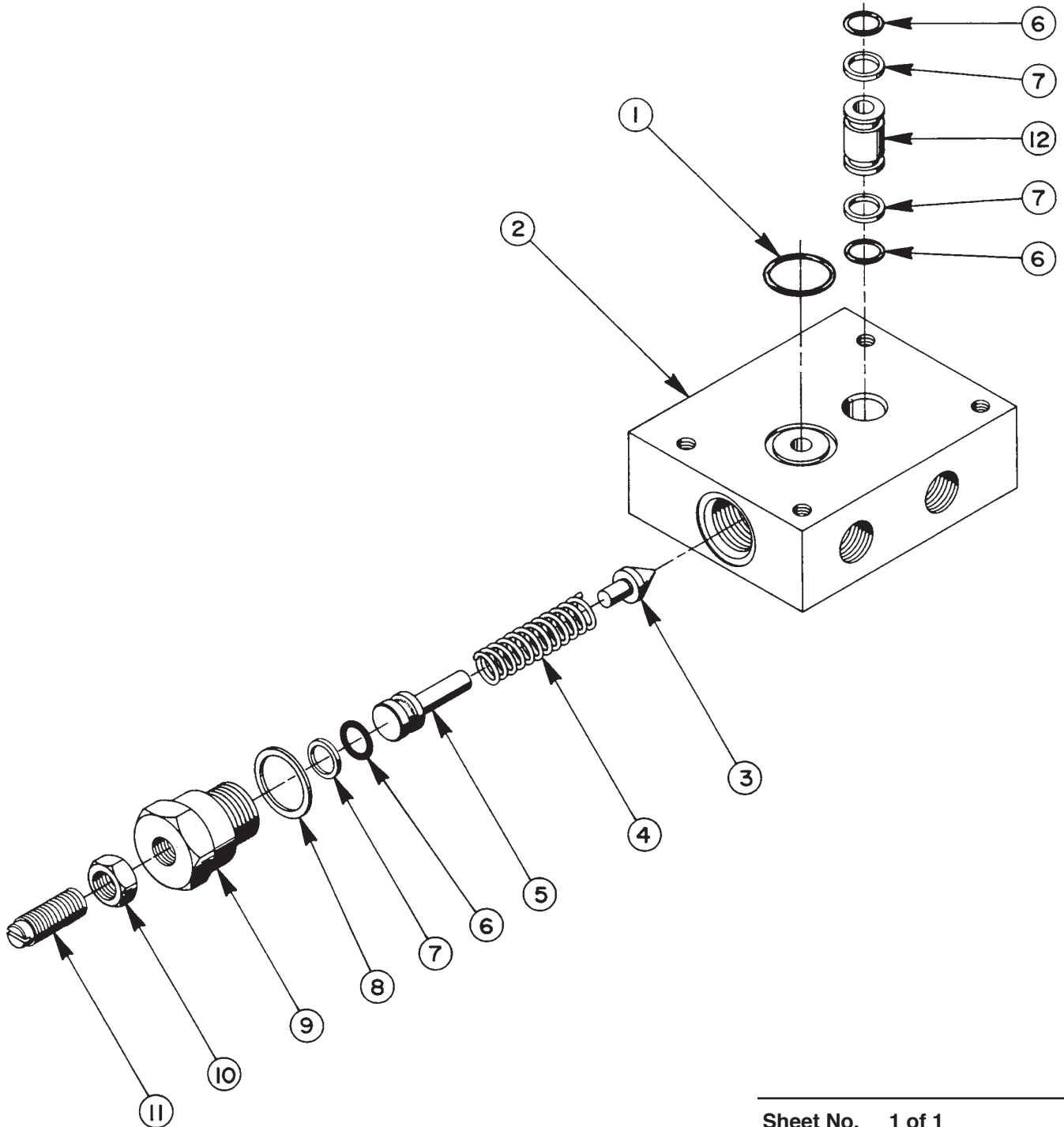


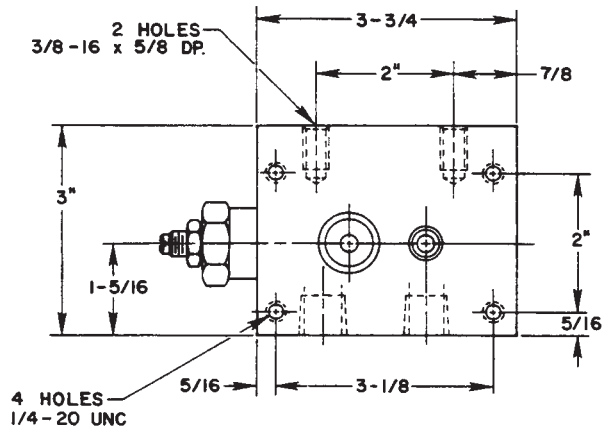
**ADJUSTABLE PRESSURE REGULATOR - REMOTE MOUNTED  
VALVE SUBPLATE ASSEMBLY**

Max. Capacity: 10,000 PSI



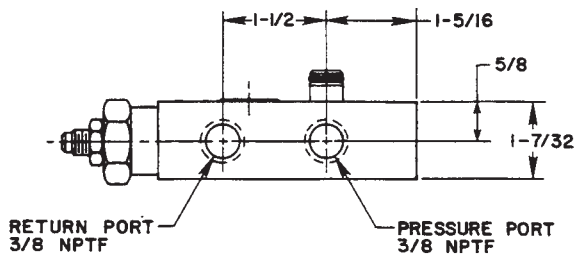
Item No.	Part No.	No. Req'd	Description
1	10303	1	O-ring (7/8 X 3/4 X 1/16, -018)
2	30584	1	Valve Body
3	21046	1	Valve Stem
4	10495	1	Compression Spring (1/2 O.D. X 1-5/8 Lg.)
5	21306	1	Spring Guide
6	10268	3	O-ring (1/2 X 3/8 X 1/16, -012)
7	11863	3	PTFE Backup Washer (-012)
8	10527	1	O-ring (.812 X .644 X .087, -908)
9	21305	1	Valve Cap
10	10386	1	Hex Nut (3/8-24)
11	22362	1	Adjusting Screw
12	21094	1	Bushing

## SPECIFICATIONS



For remote mounting of 3-way and 4-way manual valves. The built-in pressure regulating valve is adjustable to any pressure between 1,000 PSI and 10,000 PSI. Mounting holes are provided for surface or side mounting.

PORT SIZES: 3/8" NPTF  
 MAXIMUM PRESSURE: 10,000 PSI  
 MAX. RECOMMENDED FLOW: 5 GPM



Refer to any operating instructions included with this product for detailed information about operation, testing, disassembly, reassembly, and preventive maintenance.

Items found in this parts list have been carefully tested and selected. **Therefore: Use only genuine replacement parts!**

Additional questions can be directed to our Technical Services Department.